

What is your School Context Card?

What is your School Context Card?

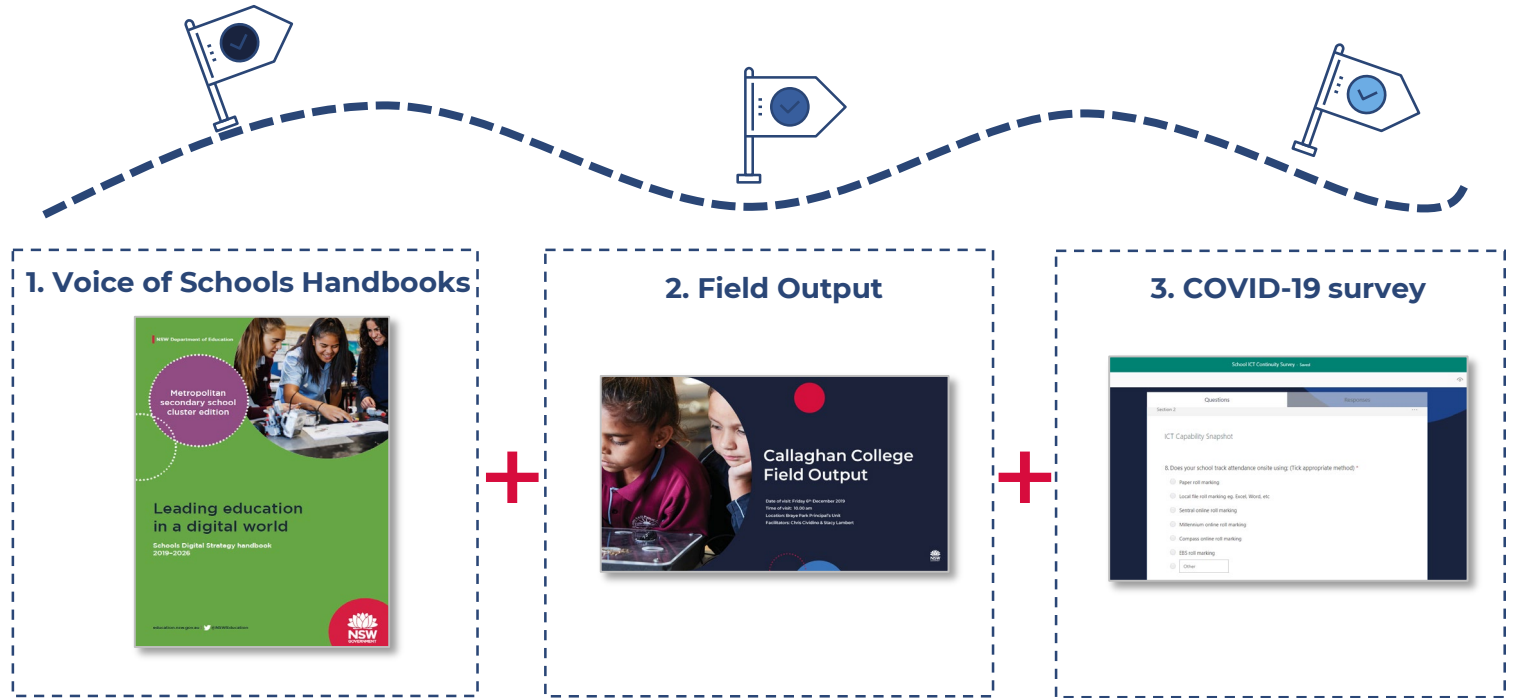
Your School Context Card aims to show key information about your school on one page. It combines data from multiple different sources, including: your voice on your digital priorities (pilot schools only), your COVID-19 school continuity survey and other Department data. The data included and it's quality is still being validated.

What the SDS team seeks to achieve with the information on your School Context Card:

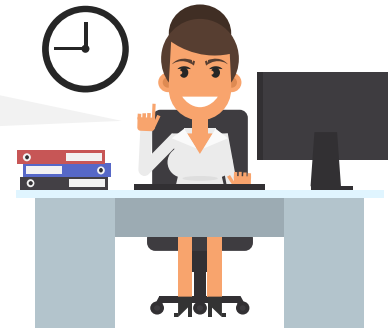
For the Digital Support Officers (DSO's) to present the data to school leaders and assist in development of plans to deliver personalised professional support and planning advice to your school*

What's in it for your school?

Schools will eventually be able to access and input their own data for future planning (personalising student learning, manage student and staff devices and technology etc.)



Voice of Schools Handbooks and field output report information were only collected from schools part of the SDS Voice of Schools research.



*DSO's are not in a position to make recommendations to schools on any third party products or service.